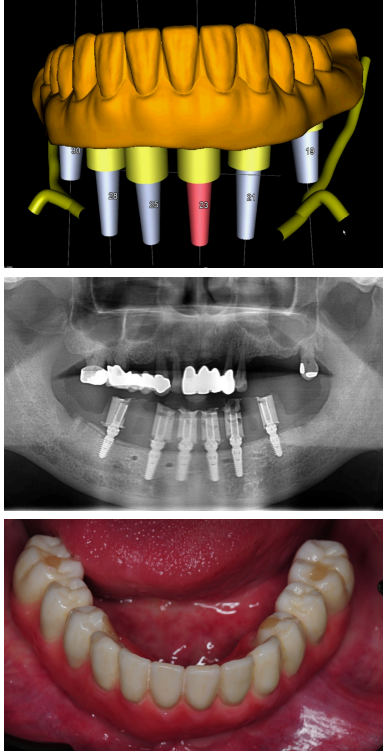


Full-Arch Dental Implant Treatments

An Easy Step-by-Step Workflow

Do you avoid full-arch treatments because it feels too complex or too expensive? Would you like to offer life-changing solutions to your edentulous patients and help them eat better, smile more, and live a healthier life? Do you want to grow your practice by offering highly efficient and profitable full-arch treatments?



One-fifth of all American adults wear a removable partial- or full denture. When these patients are presented with comprehensive treatment options, a significant number will opt for dental implants. But how do you recognize these patients within your practice and how do you present the treatments for maximal acceptance?

Learn a step-by-step workflow for replacement of teeth in the completely edentulous or patients with terminal dentition. Build confidence by understanding the digital workflow process required to create a definitive full arch dental implant prosthesis. Achieve the fit, form, function, shade, and phonetics in less time and number of visits.

Topics covered include:

- ✓ Treatment presentation and case acceptance
- ✓ Fixed (hybrids and implant-supported bridges) vs. removable full arch treatments
- ✓ Digital workflow in surgical and restorative planning of full arch treatments
- ✓ Design and materials for full arch restorations
- ✓ Full-arch therapy in atrophic ridges
- ✓ Rational for immediate load and conversion strategies
- ✓ Occlusion, aesthetic, and hygiene principles for optimal patient satisfaction

Learning Objectives:

- How to attract patients and present full arch treatments with high degree of acceptance.
- Understand features and benefits of complete implant-supported bridge, hybrid design, and removable overdentures.
- Implement digital work-flow in full-arch treatments.
- Demonstrate fully-guided implant placement techniques.
- Discover how to manage bone and soft tissue in the fully edentulous.
- Analyze immediate placement and load techniques.
- Select the appropriate restoration materials in full-arch implant treatments.

Suggested Audience: General Dentists, Prosthodontists, Periodontists, Oral Surgeons

Suggested Format: Full or Partial Day; Lecture, Workshop, Keynote

